

Fuel Doctor applications

Established in 1994 Fuel Doctors provides complementary chemical solutions for numerous industries in a wide variety of fuel handling systems and fuel types including:

- ✓ **Diesel**
- ✓ **Unleaded**
- ✓ **Two Stroke**
- ✓ **Premium Unleaded**

When applying Fuel Doctor for the first time the fuel tank should receive an **initial shock** dose which may have to be repeated if contamination is severe. After this initial treatment a lesser **maintenance dose** should be applied immediately before each refill. To prevent reoccurrence, maintain optimum cleanliness and performance.

Suitable for engines and fuel systems in:

- ✓ **Trucks Buses**
250ml 25ml
per 100 litres
- ✓ **Tractors & Agricultural Machinery**
250ml 25ml
per 100 litres
- ✓ **Mining & Earthmoving Equipment**
250ml 25ml
per 100 litres
- ✓ **Passenger, 4x4 & SUV Vehicles**
250ml 25ml
per 100 litres
- ✓ **Lawn Care & Chain Saw Equipment**
250ml 25ml
per 100 litres
- ✓ **Emergency Power Generation**
500ml 25ml
per 100 litres
- ✓ **Marine, Commercial, Pleasure, Jet Ski's**
500ml 50ml
per 100 litres

Fuel Doctor is economical

Fuel Doctor's concentrated conditioner is extremely economical. A maintenance application costs less than one cent per treated litre of fuel, based on recommended treatment rates. It is the most cost effective product on the market - its true value is reflected in rectifying and preventing fuel system and engine failure.

Fuel Doctor is distributed in Australia by Castrol. For specific application advise including Technical Data and Material Safety Data Sheets, please contact Fuel Doctors on: Free Call 1800 675 077



Achieve

maximum power,
optimum fuel economy
& prevent fuel system
contamination with...



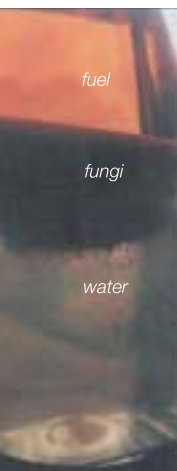
optimum combustion
minimum pollution
fuel doctor

- Cleans injectors & carburettors
- Dissolves gum & varnish
- Disperses moisture
- Eradicates bacteria & fungal growth





How fuel becomes contaminated



fuel

fungi

water

Water is the most common form of fuel contamination. Water acts as a host media by which many different types of spores are transported. These spores will germinate at hydrocarbon interfaces.

In their mature form these various organisms called either Clad, Black Death or Cladosporia, survive by the absorption of oxygen from the water and the extraction of "nutrients" from the fuel.

These organisms multiply rapidly into a thick biomass. Their sulphur-rich waste, when mixed with water produces a corrosive Organo-acid that can affect all parts of the fuel system.

If agitated, the waste will react with both the fuel and water, forming an emulsion.

Sample of contaminated fuel

The damage that follows

Contaminated fuel will seriously compromise pump and Injector service life. Corrosion damage to fuel system components can become so extensive that removal and replacement is the only option.

Operational problems occur when contaminated fuel is pumped in to vehicular tanks.

The waste accelerates fuel system corrosion from fuel tank to injector tips. Organisms can enter fuel delivery lines via pick-up points, clogging normal fuel flow, leading to fuel starvation and misfiring, contributing to specific power loss, increased fuel consumption and exhaust emissions.

Impacted fuel when agitated will produce an emulsion consisting of all the contaminants that will eventually plug your filters, decreasing and ultimately preventing fuel flow.

Storage tank contamination...
upper - flash rust
middle - fuel level tide mark
lower - fuel bugs and growths



Fungal & bacterial growth

Fuel Doctor removes contaminants

Fuel Doctor's unique formula reduces free water and microbial growth to microscopic particles, disbursing them evenly throughout the fuel stock, allowing these contaminants to be passed safely through the combustion process before building to harmful proportions.

Fuel Doctor inhibits contaminant accumulation protecting fuel systems from premature failure.

Fuel Doctor keeps system clean

Treating your fuel tank regularly with Fuel Doctor also controls the build-up of gums and varnish that occur throughout the fuel system, removing deposits that are formed at the valves and injectors due to their higher temperature and pressures.

Fuel Doctor's synthetic formulation effectively dissolves these deposits ensuring delivery of the specified amount of fuel in a correctly atomised form to each cylinder.

Keeping the air cleaner

Fuel Doctor maintains fuel efficiency and engine performance by keeping the fuel system clean and dry. Improved injector and valve efficiency promotes optimum combustion that reduces unburnt fuel that presents as soot, smoke and other emissions. This will lead to improved power, performance and life for your engine.

Composed of carbon, oxygen and hydrogen, Fuel Doctor cannot contribute to air pollution and has no detrimental effect to oxygen sensors, O-rings, catalytic converters or finely machined injector components.

Using Fuel Doctor will minimise incomplete combustion and maximise engine lubricant performance and longevity. Fuel Doctor's "slippery" characteristics provide excellent upper cylinder lubrication.

optimum combustion
minimum pollution
fuel doctor®

